



**Whispering Winds Catholic Conference Center, Inc.**

**BUSINESS OFFICE:** 4636 Mission Gorge Pl STE 203, San Diego, CA 92120

## **Workplace Violence Prevention Plan**

Whispering Winds Catholic Conference Center, Inc.'s Workplace Violence Prevention Plan (WVPP) is intended to identify, evaluate and correct workplace violence hazards; prevent and mitigate workplace violence incidents; and otherwise address workplace violence matters in accordance with Labor Code section 6401.9.

Date of last review: 6/7/2024

Date of last revision(s): N/A

### **DEFINITIONS**

**“Emergency”** means unanticipated circumstances that can be life threatening or pose a risk of significant injuries to employees or other persons.

**“Engineering controls”** means an aspect of the built space or a device that removes a hazard from the workplace or creates a barrier between the employee and the hazard.

**“Log”** means the violent incident log required by Labor Code section 6401.9.

**“Plan”** means the workplace violence prevention plan required by Labor Code section 6401.9.

**“Threat of violence”** means any verbal or written statement, including, but not limited to, texts, electronic messages, social media messages or other online posts, or any behavioral or physical conduct, that conveys an intent, or that is reasonably perceived to convey an intent, to cause physical harm or to place someone in fear of physical harm, and that serves no legitimate purpose.

**“Workplace violence”** means any act of violence or threat of violence that occurs in a place of employment. Workplace violence includes, but is not limited to, the following:

- The threat or use of physical force against an employee that results in, or has a high likelihood of resulting in, injury, psychological trauma or stress, regardless of whether the employee sustains an injury.
- An incident involving a threat or use of a firearm or other dangerous weapon, including the use of common objects as weapons, regardless of whether the employee sustains an injury.
- The following four workplace violence types:
  - **“Type 1 violence,”** which means workplace violence committed by a person who has no legitimate business at the worksite and includes violent acts by anyone who enters the workplace or approaches employees with the intent to commit a crime.

## Workplace Violence Prevention Plan

- **“Type 2 violence,”** which means workplace violence directed at employees by customers, clients, patients, students, inmates or visitors.
- **“Type 3 violence,”** which means workplace violence against an employee by a present or former employee, supervisor, or manager.
- **“Type 4 violence,”** which means workplace violence committed in the workplace by a person who does not work there, but has or is known to have had a personal relationship with an employee.

Workplace violence does not include lawful acts of self-defense or defense of others.

**“Work practice controls”** means procedures and rules, which are used to effectively reduce workplace violence hazards.

## Workplace Violence Prevention Plan Responsibility

The following individual(s) have authority and responsibility for implementing the provisions of this plan. If multiple persons are responsible for the plan, their specific roles are described.

Job Title/Position	Name	WVPP Responsibilities	Phone/ Ext. Number	Email
Executive Administrator	Jacqueline Renteria	Overall responsibility for WVPP administration	(619) 464-1479 Ext. 208	jacqueline@whisperingwinds.org
		Employee training and participation		
Director Marketing	Abbey Magpoc	Investigation, evaluation, and correction of workplace violence hazards	(619) 464-1479 Ext. 205	abbey@whisperingwinds.org

All managers and supervisors are responsible for implementing and maintaining the WVPP in their work areas and for answering employee questions about the WVPP.

## Employee Involvement

Whispering Winds Catholic Conference Center, Inc. maintains the following policies and procedures to obtain the active involvement of employees in developing and implementing the WVPP:

- The company will work with and allow employees to participate in:
  - **Identifying, evaluating and determining corrective measures to prevent workplace violence.** The company will incorporate a work violence safety component to their weekly meetings to discuss identifying, evaluating and correcting workplace violence hazards and/or concerns. Employees are encouraged to report hazards and concerns and otherwise provide related feedback and suggestions to their manager and the WVPP administrator by verbal

## Workplace Violence Prevention Plan

communication or submitting the Workplace Violence Hazard Identification form either in-person or via email.

- **Designing and implementing training.** Employees are encouraged to participate in designing and implementing training programs through suggestions and feedback provided to managers and the WVPP administrator via phone or email, to be incorporated into training materials.
- **Reporting and investigating workplace violence incidents.** Employees are encouraged to participate in developing efficient and timely methods of reporting and investigating workplace violence incidents through written suggestions and feedback provided to managers and the WVPP administrator.
- The company will ensure that all workplace violence policies and procedures within this written plan are clearly communicated and understood by all employees. Managers and supervisors will enforce the rules fairly and uniformly.
- All employees will follow all workplace violence prevention plan directives, policies and procedures, and assist in maintaining a safe work environment.
- The plan shall be in effect at all times and in all work areas, and be specific to the hazards and corrective measures for each work area and operation.

## Employee Access to the Written WVPP

Whispering Winds Catholic Conference Center, Inc. ensures that the WVPP plan shall be in writing, and shall be available and easily accessible to employees and representatives of the California Division of Occupational Safety and Health (Cal/OSHA) at all times. This will be accomplished by:

- Whenever an employee requests a copy of the written WVPP, providing the requester with a printed copy of the WVPP, unless the employee agrees to receive an electronic copy.

## Workplace Violence Incident Reporting Procedure

Whispering Winds Catholic Conference Center, Inc. will implement the following procedures to ensure that it can effectively accept and respond to reports of workplace violence:

- All threats or acts of workplace violence must be reported to an employee's manager, who will inform the WVPP administrator. This will be accomplished by submitting the Whispering Winds Incident Report form either in-person or via email.

Whispering Winds Catholic Conference Center, Inc. will neither retaliate against anyone for reporting a workplace violence incident, nor tolerate or permit retaliation by management, employees or coworkers for reporting a workplace violence incident. An employee who retaliates against a coworker for reporting an incident is subject to discipline, up to and including termination.

## Employee Compliance

Whispering Winds Catholic Conference Center, Inc. maintains the following effective procedures to ensure that all employees, both supervisory and nonsupervisory, comply with the WVPP:

- Training employees, supervisors and managers on all WVPP provisions upon its initial establishment or upon hire, and through annual WVPP training sessions. Additionally, Whispering Winds Catholic Conference Center, Inc. provides periodic training whenever a new or previously unrecognized workplace violence hazard has been identified and when changes are made to the plan.

## Workplace Violence Prevention Plan

- Retraining employees whose safety performance is deficient or inconsistent with the WVPP.
- Recognizing employees who demonstrate safe work practices consistent with the WVPP in the workplace through recognition in monthly Staff Updates and/or company emails and consideration during annual employee reviews.
- Disciplining employees for failure to comply with the WVPP through written documentation.

## Communication with Employees

Whispering Winds Catholic Conference Center, Inc. recognizes that open communication between our management team and employees about workplace violence incidents, hazards and concerns is critical to a safe and productive workplace. Our communication system is designed to facilitate effective and efficient communication of information in a form that is readily understandable by all employees. To that end, we maintain the following communication procedures regarding workplace violence matters:

- New employee training that includes workplace violence prevention policies and procedures.
- Workplace violence prevention training upon implementation of the WVPP and annually thereafter, with additional periodic training whenever a new or previously unrecognized workplace violence hazard has been identified and when changes are made to the plan.
- Procedures for employees to report a violent incident, threat or other workplace violence concern to their employer or law enforcement without fear of reprisal or adverse action, which include:
  - Employees may report a violent incident or threat by alerting their manager who will submit an Incident Report to the Executive Administrator.
    - The *Workplace Violence Contact Information* form is posted in the hallway by the refrigerator in the staff break room. Employees may reference that form to contact the WVPP administrators and/or law enforcement.
    - In the event of an emergency, employees should dial 911.
- Employees' reports of violent incidents, threats or workplace violence concerns will be investigated in a timely manner, and employees will be informed of the investigation results and any corrective actions to be taken.
  - The company will timely investigate such reports by gathering information from employees and other individuals as needed, depending on the reported incident, threat or concern, including by in-person communication/conversations; written reports and witness statements; and consultations and conversations with law enforcement or other third parties as needed.
  - The company will provide updates on the status of investigations and corrective actions to employees through email and/or meetings. Depending on the nature of the investigation, these updates could include information about the progress of investigations, the results of investigations and any corrective actions taken.
  - The company will provide updates during quarterly director meetings to discuss the workplace violence concerns and the WVPP. These meetings could involve sharing updates to the plan, discussing recent incidents and coordinating training sessions.
- In the event of a workplace violence incident, employees may access their personal mobile device for seeking emergency assistance, assessing the safety of the situation, or communicating with a person to verify their safety.

## Emergency Response Procedures

Whispering Winds Catholic Conference Center, Inc. has in place the following specific measures to handle actual or potential workplace violence incidents and emergencies:

## Workplace Violence Prevention Plan

- Effective means to alert employees of the presence, location and nature of workplace violence emergencies by using the following methods of communication:
  - Phone call, text message, or Google Chat will be sent to employees;
  - Verbal communication will be used when effective
  - **"Code Silver"** indicates a violent intruder; the location, along with the direction to shelter in place or evacuate, will be given
- Whispering Winds Catholic Conference Center, Inc. maintains the following evacuation or sheltering plans (See office map on page 6):
  - Evacuation: Exit out of one of the five nearest and safest exit doors to the parking lot.
  - Sheltering: Safely move to the restroom or the nearest enclosed office with a lockable door.
  - Meeting Site: Gather on the sidewalk in front of 4616 Mission Gorge Pl, San Diego, CA 92120 (Able Patrol & Guard)
- Employees can obtain help from staff or law enforcement through the following means:
  - In the event of an emergency, including a workplace violence emergency, call for emergency assistance by dialing 911.
  - Then, when it is safe to do so, notify the Manager on Duty and Executive Administrator.

Job Title/Position	Name	WVPP Responsibilities	Phone/ Ext. Number	Email
Director of Marketing	Abbey Magpoc	Responsible for hazard identification	(619) 464-1479 Ext. 205	abbey@whisperingwinds.org
Executive Administrator	Jacqueline Renteria	Overall responsibility for WVPP administration and emergency response	(619) 464-1479 Ext. 208	jacqueline@whisperingwinds.org

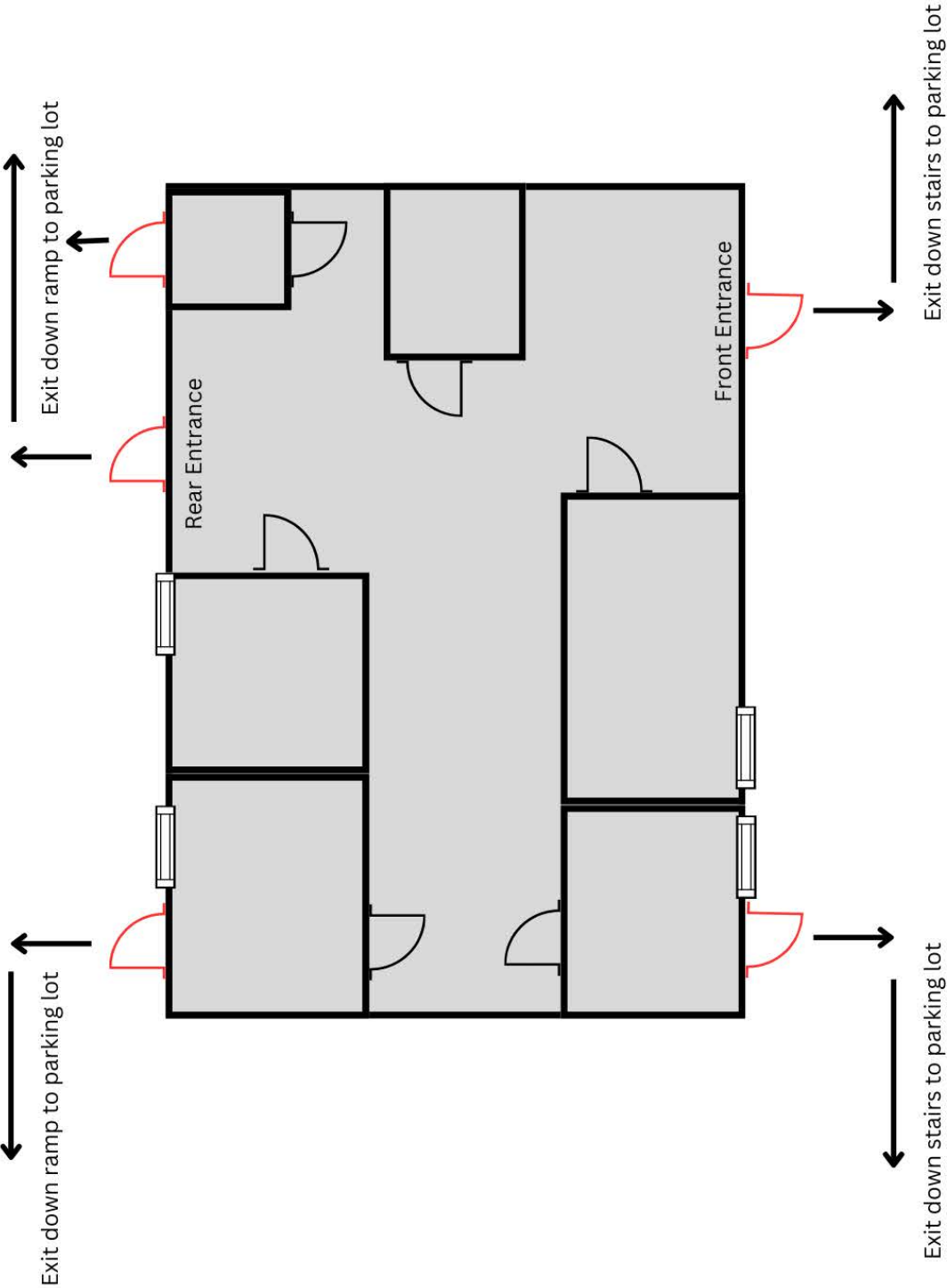
- Contact information for response staff and local law enforcement is posted with the *Workplace Violence Contact Information* form in the following common areas:
  - Staff break room, in the hallway leading to the restroom.

## Training and Instruction

All employees, both supervisory and nonsupervisory, will have training and instruction on general and job-specific workplace violence practices. These sessions could involve presentations, videos, discussions, practical exercises and distribution of written materials. Training and instruction will be provided as follows:

- When the WVPP is first established.
- Annually to ensure all employees understand and comply with the plan.
- Periodically training when a new or previously unrecognized workplace violence hazard has been identified and when changes are made to the plan. The additional training may be limited to addressing the new workplace violence hazard or changes to the plan.

Whispering Winds Catholic Conference Center, Inc. will provide its employees with training and instruction on the definitions found on page 1 of this plan and the requirements listed below:



**Meeting Site**  
On sidewalk in front of  
4616 Mission Gorge Pl,  
San Diego CA 92120  
(Able Patrol & Guard)

## Workplace Violence Prevention Plan

- This WVPP, how to obtain a copy of the WVPP at no cost, and how to participate in the WVPP's development and implementation.
- How to report workplace violence incidents or concerns to the employer or law enforcement without fear of reprisal.
- Workplace violence hazards specific to the employees' jobs, the corrective measures implemented, how to seek assistance to prevent or respond to violence, and strategies to avoid physical harm.
- The violent incident log and how to obtain copies of records pertaining to hazard identification; evaluation and correction; training records; and violent incident logs.
- Opportunities Whispering Winds Catholic Conference center, Inc. has for interactive questions and answers with a person knowledgeable about the WVPP.
- Strategies to avoid/prevent workplace violence and physical harm, such as:
  - How to recognize workplace violence hazards including the risk factors associated with the four types of workplace violence.
    - Be alert and mindful of guest interactions with staff and provide support as necessary.
      - When approaching, state something similar to, "Excuse me, you're needed in a meeting," to signal the end of the guest interaction.
    - If an interaction becomes aggressive, the staff member will say, "One moment, while I ask for a manager to help" and will walk away.
  - Ways to defuse hostile or threatening situations, including workplace bullying, which can escalate to harassment and/or workplace violence.

**7 TIPS**  
For Defusing Potentially Violent Situations

**1 Practice situational awareness.**  
Calmly think of an exit plan and observe the other person's behaviour.

**2 Speak calmly and slowly.**  
Watch your tone and volume and avoid argumentative statements.

**3 Acknowledge the problem.**  
Name their issue, acknowledge their emotions, and ask questions to gain understanding.

**4 Listen.**  
Use verbal cues and body language to show them you are listening.

**5 Show empathy.**  
Ask nonjudgemental questions and validate their emotions. Express your goal and try to understand theirs.

**6 Use silence to slow down.**  
Create pauses to help yourself and the other person regain composure.

**7 Provide options.**  
Refocus the conversation on the issue and offer them choices for how to proceed.

CTRI  
CRISIS & TRAUMA  
RESOURCE INSTITUTE

Taken from the blog post "7 Tips for Defusing Violent Situations" by George Anderson

Find more information and resources at [ctrinstitute.com](http://ctrinstitute.com)

*Resolving*  
**CONFLICT**

know-stress-zone.com

**1. COMMUNICATION**

- Listen without interrupting each other
- Show understanding of the problem
- Present your point of view of the situation
- Explain how you feel

**2. NEGOTIATION**

- Brainstorm possible solutions for the conflict
- Accept the need for necessary compromise
- Choose a fair solution for both parties
- Implement the resolution plan

**3. CONSOLIDATION**

- Evaluate how your resolution plan is carrying out
- Communicate your feelings

*Think to yourself...*  
**HOW DO YOU RESOLVE YOUR CONFLICTS?**



## Workplace Violence Prevention Plan

- Refer to p. 12-13 of the Emergency Procedures for Violent Intruders and Lockdown procedures
- Emergency medical care available in the event of any violent act upon an individual in the workplace.
  - Call 911
  - Locate and use the first aid kit located in the cabinet near the restroom
- Opportunities for staff training and development
  - At a minimum of twice per year, periodic training opportunities, such as videos, documents or courses will be assigned.

## Workplace Violence Hazard Identification and Evaluation

The following policies and procedures are established and required to be conducted by Whispering Winds Catholic Conference Center, Inc. to ensure that workplace violence hazards are identified and evaluated.

Inspections shall be conducted when the plan is first established, after each workplace violence incident, and whenever the company is made aware of a new or previously unrecognized hazard.

- Whispering Winds Catholic Conference Center, Inc. will review all submitted/reported concerns of potential hazards:
  - Review of all submitted and reported concerns via the Incident Report Form, *Workplace Violence Hazard Reporting Form* or other methods for reporting workplace violence hazards within one day of report.

### Periodic Inspections

Quarterly periodic inspections of workplace violence hazards will identify unsafe conditions and work practices. This may require assessment for more than one type of workplace violence. Periodic inspections shall be conducted when the WVPP is first established, after each workplace violence incident, and whenever the company is made aware of a new or previously unrecognized hazard.

Periodic inspections to identify and evaluate workplace violence and hazards will be performed by the following designated personnel in the following areas of the workplace:

Name/Job Title	Department/Location
Abbey Magpoc - Director of Marketing	San Diego Business Office – all exterior and interior areas of the office, including the exits and parking areas

Inspections for workplace violence hazards include assessing:

- The exterior and interior of the workplace for its potential for theft, including whether there is cash, electronics, supplies, or other assets or products on site that may make the worksite a likelier target for robbery, burglary or other criminal acts.
- Whether employees interact with members of the public (e.g., customers, visitors, clients, etc.) and any potential risk factors based on those interactions.
- The nature of the industry and any associated risk factors, for example, if there are cash transactions with the customers
- The number of workers on site and risk factors for employees working in small numbers or alone.



## Workplace Violence Prevention Plan

- Whether employees work late night or early morning hours and the risk factors associated with those schedules.
- The need for or effectiveness of existing security/violence surveillance measures, such as mirrors and cameras.
- The need for or effectiveness of existing access management and security systems (i.e., key cards, codes, traditional lock and key, etc.), and any violations or circumvention of those security procedures by employees or members of the public, whether intentional or unintentional.
- The need for or effectiveness of existing physical barriers in the worksite, for example, security windows and/or barriers between customers and service personnel, etc.
- The need for or effectiveness of existing alarm systems, including “panic alarm/panic button” systems.
- Adequate illumination of all work areas, including hallways, entranceways and parking areas.
- Procedures for employee response during a robbery or other criminal act, including our policy prohibiting employees who are not security guards from confronting violent persons or persons committing a criminal act.
- Procedures for reporting suspicious or unusual activities or persons.
- Posting of emergency contact information for law enforcement, security and emergency services.
- Whether employees have access to a telephone with an outside line.
- Whether employees have effective escape routes from the workplace.
- Whether employees have a designated safe area where they can go in an emergency.
- Frequency and severity of threatening or hostile situations that may lead to workplace violence incidents by persons who are customers, visitors or service recipients of our establishment.
- Employees’ skill and knowledge in safely handling threatening or hostile customers, service recipients or other members of the public.
- Effectiveness of systems and procedures that warn others of actual or potential workplace violence danger or that summon assistance (e.g., alarms, PA systems, panic buttons or other worksite alert systems).
- The use of work practices such as the “buddy” system for specified emergency events.
- How well our establishment’s management and employees communicate with each other.
- Access to and freedom of movement within the workplace by non-employees.
- Frequency and severity of employees’ reports of threats of physical or verbal abuse by managers, supervisors or other employees.
- Any prior violent acts, threats of physical violence, verbal abuse, property damage, or other signs of strain or pressure in the workplace.
- The working condition of interior and exterior door locks.

When a hazard has been identified, the company will analyze the hazard in coordination with appropriate persons, such as employees, management personnel, security services and/or law enforcement personnel, in order to identify timely methods to correct the hazard.

## Workplace Violence Hazard Correction

Workplace violence hazards will be evaluated and corrected in a timely manner. After such hazards are identified, either through periodic inspection, review and evaluation of submitted reports and concerns, or other means, Whispering Winds Catholic Conference Center, Inc. will implement the following effective procedures to correct these workplace violence hazards:

- The WVPP administrator will immediately begin taking appropriate steps to evaluate and address the hazard to ensure it is corrected in a timely manner. Depending on the hazard, this may generally include, for example:

## Workplace Violence Prevention Plan

- Communicating corrective measures and/or procedures to employees and management personnel.
- Obtaining services for maintenance, repair, replacement or purchase of equipment, and/or making improvements or alterations to company infrastructure, systems and/or property.
- Training or retraining personnel on workplace violence procedures.
- Any other actions needed to timely correct the workplace violence hazard.
- If an imminent workplace violence hazard exists that cannot be immediately abated without endangering employee(s), all exposed employee(s) will be removed from the situation except those necessary to correct the existing condition. Employees necessary to correct the hazardous condition will be provided with the necessary protection. The Executive Director or manager on duty will remain nearby to field emergency response personnel and be equipped with a cell phone.
- All corrective actions taken will be documented and dated on the appropriate forms, including:
  - o Staff Disciplinary Action Notice Form, if applicable
  - o Workplace Violence Hazard Identification Form
  - o Workplace Violence Incident Log
- The company will take corrective measures for workplace violence hazards that may include the following specific measures:
  - Minimizing the workplace's attractiveness for potential criminal activity, such as robbery, burglary or other criminal acts by:
    - Maintaining, replacing, repairing and/or improving lighting around and at the workplace, including exterior lighting around parking areas and building entrances.
    - Posting signs notifying the public that cameras are monitoring the facility and no/limited cash is kept on the premises.
    - Maintaining, replacing, repairing and/or improving surveillance and security measures, such as cameras and mirrors, to provide information as to what is going on outside and inside the workplace in order to dissuade criminal activity.
    - Hiring security guards and having them patrol the workplace exterior and interior.
    - Installing security surveillance cameras in and around the workplace.
  - Maintaining, replacing, repairing, improving and/or purchasing workplace security systems and access management systems, such as key codes, door locks, physical barriers and emergency alarms.
  - Modifying schedules and/or security measures to correct hazards associated with employees working alone or in small groups, and/or employees working late night/early morning hours.
  - Maintaining, replacing, repairing and/or improving employer communication systems to ensure employees can report workplace violence incidents and contact emergency services.
  - Posting the most recent contact information for WVPP administrators, law enforcement, fire and medical services in common areas.
  - Correcting, modifying and/or retraining on methods and procedures to control, access and monitor movement within the workplace by non-employees, including customers, clients, visitors, deliveries, recently discharged employees and persons with whom one of our employees is having a dispute.
  - Maintaining, repairing or installing effective systems to warn others of violence or a danger, or to summon assistance, e.g., PA system or alarms.
  - Ensuring adequate employee escape routes and modifying existing routes as needed for effectiveness.
  - Ensuring that employee disciplinary and discharge procedures address the potential for workplace violence.

## Workplace Violence Prevention Plan

### Procedures for Post Incident Response and Investigation

After a workplace incident, the WVPP administrator or their designee will implement the following post-incident procedures:

- Visit the scene of an incident as soon as safe and practicable.
- Interview the involved parties, such as employees, witnesses, law enforcement and/or security personnel and obtain written statements via the company's Incident Report form, if applicable.
- Review security footage of existing security systems, if any.
- Examine the workplace for security risk factors associated with the incident, including any previous reports of inappropriate behavior by the perpetrator.
- Determine the likely cause of the incident.
- Take corrective action consistent with this WVPP to correct this workplace violence hazard and prevent similar incidents from occurring.
- Document the findings and ensure corrective actions have been carried out.
- Obtain any reports completed by law enforcement.
- Use the *Workplace Violence Incident Log* form for every workplace violence incident and include the following information:
  - The date, time and location of the incident.
  - The workplace violence type(s) involved in the incident.
  - A detailed description of the incident.
  - A classification of who committed the violence, including whether the perpetrator was a client or customer, family or friend of a client or customer, stranger with criminal intent, coworker, supervisor or manager, partner or spouse, parent or relative, or other perpetrator.
  - A classification of circumstances at the time of the incident, including, but not limited to, whether the employee was completing usual job duties, working in poorly lit areas, rushed, working during a low staffing level, isolated or alone, unable to get help or assistance, working in a community setting, or working in an unfamiliar or new location.
  - A classification of where the incident occurred, such as in the workplace, parking lot or other area outside the workplace, or other area.
  - The type of incident, including, but not limited to, whether it involved any of the following:
    - Physical attack without a weapon, including, but not limited to, biting, choking, grabbing, hair pulling, kicking, punching, slapping, pushing, pulling, scratching or spitting.
    - Attack with a weapon or object, including, but not limited to, a firearm, knife or other object.
    - Threat of physical force or threat of the use of a weapon or other object.
    - Sexual assault or threat, including, but not limited to, rape, attempted rape, physical display, or unwanted verbal or physical sexual contact.
    - Animal attack.
    - Other.
  - Consequences of the incident, including, but not limited to:
    - Whether security or law enforcement was contacted and their response.
    - Actions taken to protect employees from a continuing threat or from any other hazards identified as a result of the incident.
  - Information about the person completing the log, including their name, job title and the date completed.
- Review all previous incidents.
- Begin WVPP review consistent with this plan's "WVPP Review and Revision" provisions.

Ensure that no personal identifying information is recorded or documented in the written investigation report. This includes information that would reveal identification of any person involved in a violent incident, such as

## Workplace Violence Prevention Plan

the person's name, address, email address, telephone number, Social Security number or other information that, alone or in combination with other publicly available information, reveals the person's identity.

### WVPP Review and Revision

The Whispering Winds Catholic Conference Center, Inc. WVPP will be reviewed for effectiveness:

- At least annually.
- When a deficiency is observed or becomes apparent.
- After a workplace violence incident.
- As needed.

Review and revision of the WVPP will include the procedures listed in this WVPP's "Employee Involvement" section, as well as the following procedures to obtain the active involvement of employees in reviewing the plan's effectiveness:

- Reviewing workplace violence investigations, findings and violent incident log(s).
- Assessing the effectiveness of security systems, including alarms, emergency response and security personnel availability (if applicable).
- Review that violence risks are being properly identified, evaluated, and corrected, and that any necessary revisions are made promptly and communicated to all employees. These revisions could involve changes to procedures, updates to contact information and additions to training materials.

### Recordkeeping

Whispering Winds Catholic Conference Center, Inc. will:

- Create and maintain records of workplace violence hazard identification, evaluation and correction for a minimum of five (5) years.
- Create and maintain training records for a minimum of one (1) year and include the following:
  - Training dates.
  - Contents or a summary of the training sessions.
  - Names and qualifications of persons conducting the training.
  - Names and job titles of all persons attending the training sessions.
- Maintain violent incident logs for a minimum of five (5) years.
- Maintain records of workplace violence incident investigations for a minimum of five (5) years.
  - The records shall not contain medical information per subdivision (j) of section 56.05 of the Civil Code.
- Make available to Cal/OSHA upon request for examination and copying records of workplace violence hazard identification, evaluation and correction; and training, incident logs and workplace violence incident investigations required by Labor Code section 6401.9(f).

### Employee Access to Records

The following records shall be made available to employees and their representatives, upon request and without cost, for examination and copying within **15 calendar days of a request**:

- Records of workplace violence hazard identification, evaluation and correction.
- Training records.

## Workplace Violence Prevention Plan

- Violent incident logs.

### Employer Reporting Responsibilities

As required by [California Code of Regulations \(CCR\), Title 8, Section 342\(a\) Reporting Work-Connected Fatalities and Serious Injuries](#), Whispering Winds Catholic Conference Center, Inc. will immediately report to Cal/OSHA any serious injury or illness (as defined by [CCR, Title 8, Section 330\(h\)](#)) or death (including any due to workplace violence) of an employee occurring in a place of employment or in connection with any employment.

“I, Jacqueline Renteria, Executive Administrator of Whispering Winds Catholic Conference Center, Inc., on behalf of Whispering Winds Catholic Conference Center, Inc. hereby authorize the establishment, implementation and maintenance of this written Workplace Violence Prevention Plan and the documents/forms within this written plan. Whispering Winds Catholic Conference Center, Inc. is committed to ensuring the safety and well-being of its employees and this plan is designed to help achieve that goal.”

Jacqueline Renteria, Executive Administrator



Signature of person authorizing this WVPP

June 11, 2024

Date of Signature

Abbey Magpoc, Director of Marketing



Signature of person authorizing this WVPP

June 11, 2024

Date of Signature